



# AAKI

GROUNDING SOLUTIONS

2023 CATALOGUE

FEATURING OUR PATENT PENDING

**FLEXMOUNT™ BRACKETS &**

**MOTOR SHAFT GROUNDING MODULES**

**QUICK &  
EASY**  
INSTALLATION

**UNDER 20**  
minutes

**REDUCE**  
MAINTENANCE  
costs up to **70%**

**THE ULTIMATE SOLUTION  
FOR MOTOR BEARING  
PROTECTION**



# THANK YOU FOR YOUR INTEREST IN AAKI GROUNDING SOLUTIONS

Stand out from the competition by prioritizing your customers' needs with Aaki Grounding Solutions. Our top-quality grounding products provide increased longevity and protection for your electric motor bearings.

With over three decades of experience in engineering, design and development, we are proud to be the go-to company to protect your motor bearings against damaging motor shaft voltages.

Here are some key points about Aaki that we are really proud of:

- **Simplicity in design ensures durability while remaining cost effective.**
- **Our electric motor shaft grounding solutions are recognized for their ease of installation.**
- **We can customize our grounding solutions to feature your branding by adding your logo and contact information.**
- **Our team of experts are available to assist you in identifying and diagnosing your motor bearing problems.**

We are committed to ensuring that our customers have all the information they need to make informed decisions when it comes to protecting their electric motors and equipment.

If you have any questions about our products, solutions, or need help solving a problem, please do not hesitate to contact us at 1-888-899-AAKI (2254) or by email at [info@aaki.ca](mailto:info@aaki.ca).

Thank you for considering Aaki as your grounding solution provider. We look forward to hearing from you soon.

Best regards,



Andy Kveps, P.Eng.  
Owner & Head of R&D  
Aaki Grounding Solutions



# QUICKLY FIND THE INFORMATION YOU NEED

## TABLE OF CONTENTS



Motor Shaft Grounding Module (MSGM).....1, 2 & 3

MOTOR SHAFT  
GROUNDING MODULE

FleXmount™ Bracket.....4 & 5

FLEXMOUNT™ BRACKET

FleXForm™ Tool.....6 & 7

FLEXFORM™ TOOL

VerTmount Bracket.....8 & 9

VERTMOUNT BRACKET

MSGM Extension Plates.....10, 11 & 12

EXTENSION PLATES

MSGM Spacer Plates.....13,14 & 15

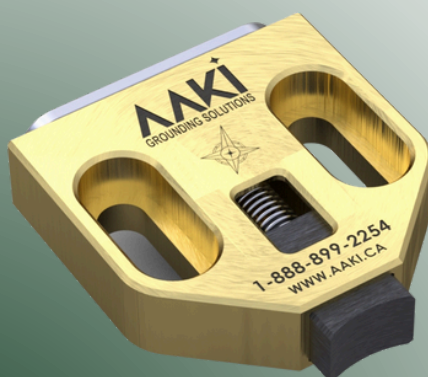
SPACER PLATES

MSGM DrillBuddy™ Installation Tool.....16 & 17

DRILLBUDDY™  
INSTALLATION TOOL

Contact Information.....18

CONTACT INFO





# MOTOR SHAFT GROUNDING MODULES





"ELECTRICAL DAMAGE CAUSED BY SHAFT VOLTAGES CAN SIGNIFICANTLY REDUCE THE LIFESPAN OF YOUR ELECTRIC MOTORS. INSTALLING A MOTOR SHAFT GROUNDING MODULE IS AN EFFECTIVE WAY TO PROTECT YOUR EQUIPMENT AND EXTEND ITS LIFE."  
- Brian K. Johnson, Senior Engineer at SKF USA Inc. "Electrical Damage to Bearings - published in the IEEE Transactions on Industry Applications in 2002."



## MOTOR SHAFT GROUNDING MODULE



### TECHNICAL SPECIFICATIONS:

- Dimensions: 36mm x 42mm x 10mm (1.42 inches x 1.65 inches x 0.39 inches)
- Brush surface area: 70mm<sup>2</sup>
- Weight: 60g
- Material: High-current capacity graphite brush with a large surface area, capable of carrying up to 10 Amps, housed in a solid machined aluminum bronze construction with high copper content brush
- Product Compatibility: Fractional to small motor models 1 HP-100s of HPs
- Additional Information: Slotted screw holes for easy adjustment, accepts #10 socket head cap screws

### PRODUCT OVERVIEW:

The simplistic design of our Motor Shaft Grounding Module ensures durability and advanced grounding solutions, while protecting electric motor bearings from harmful electrical currents. Solidly constructed out of machined corrosion resistant aluminum bronze complete with a high copper, contoured graphite brush and Brush Life Window Technology, this module is engineered to provide long-lasting protection against electrical currents. The compact design is easy to install and compatible with a wide range of motor models, making it an ideal solution for various industrial environments.

### KEY FEATURES:

- Provides long-lasting protection against harmful electrical currents
- Contoured carbon brush with high copper content and Brush Life Window technology, providing years of service life
- Easy to install and compatible with a wide range of motor models

MOTOR SHAFT GROUNDING MODULE

FLEXMOUNT™ BRACKET

FLEXFORM™ TOOL

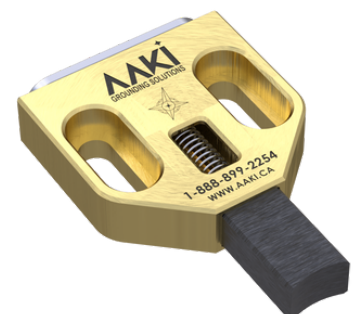
VERTMOUNT BRACKET

EXTENSION PLATES

SPACER PLATES

DRILLBUDDY™ INSTALLATION TOOL

CONTACT INFO



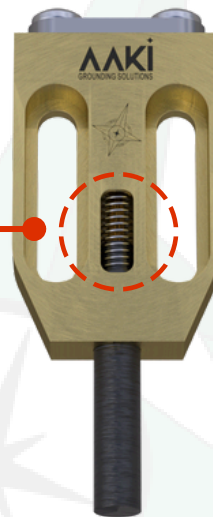
FOR THOSE WITH UNIQUE SIZE OR SHAPE REQUIREMENTS, WE OFFER CUSTOM SIZES TAILORED TO YOUR SPECIFIC NEEDS.



THE BRUSH LIFE WINDOW MAKES IT QUICK AND EASY TO INSPECT THE CARBON BRUSH DURING ROUTINE MAINTENANCE CHECKS, REDUCING THE TIME AND EFFORT REQUIRED FOR INSPECTIONS



## MOTOR SHAFT GROUNDING MODULE



### TECHNICAL SPECIFICATIONS:

YOUR PARAGRAPH TEXT

- Dimensions: 19mm x 34mm x 5.5mm (0.75 inches x 1.34 inches x 0.22 inches)
- Brush Diameter: 4.25mm
- Weight: 16g
- Material: Solid machined aluminum bronze construction with high copper content graphite brush
- Product Compatibility: Fractional to small motor models
- Additional Information: Mount using #6-32 x 1/4" mounting screws

### PRODUCT OVERVIEW:

The Motor Shaft Grounding Module Mini is an affordable and compact solution designed for fractional and small HP motors. CNC Machined from a single billet of aluminum bronze and featuring a contoured carbon brush with high copper content and Brush Life Window Technology, this module provides superior performance and long-lasting protection against harmful shaft currents. The Motor Shaft Grounding Module Mini is easy to install and compatible with most motor models, making it an ideal solution for various industrial environments.

### KEY FEATURES:

- Slotted screw Hole allow for fine adjustment to ensure brush and module are square to shaft
- Contoured carbon brush with high copper content and Brush Life Window Technology (Standard on all Aaki MSGM)
- Low profile compact design fits in tight spaces
- Compatible with most motor models
- Easy to install and maintain

MOTOR SHAFT  
GROUNDING MODULE

FLEXMOUNT™ BRACKET

FLEXFORM™ TOOL

VERTMOUNT BRACKET

EXTENSION PLATES

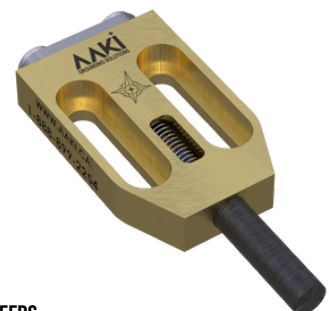
SPACER PLATES

DRILLBUDDY™  
INSTALLATION TOOL

CONTACT INFO



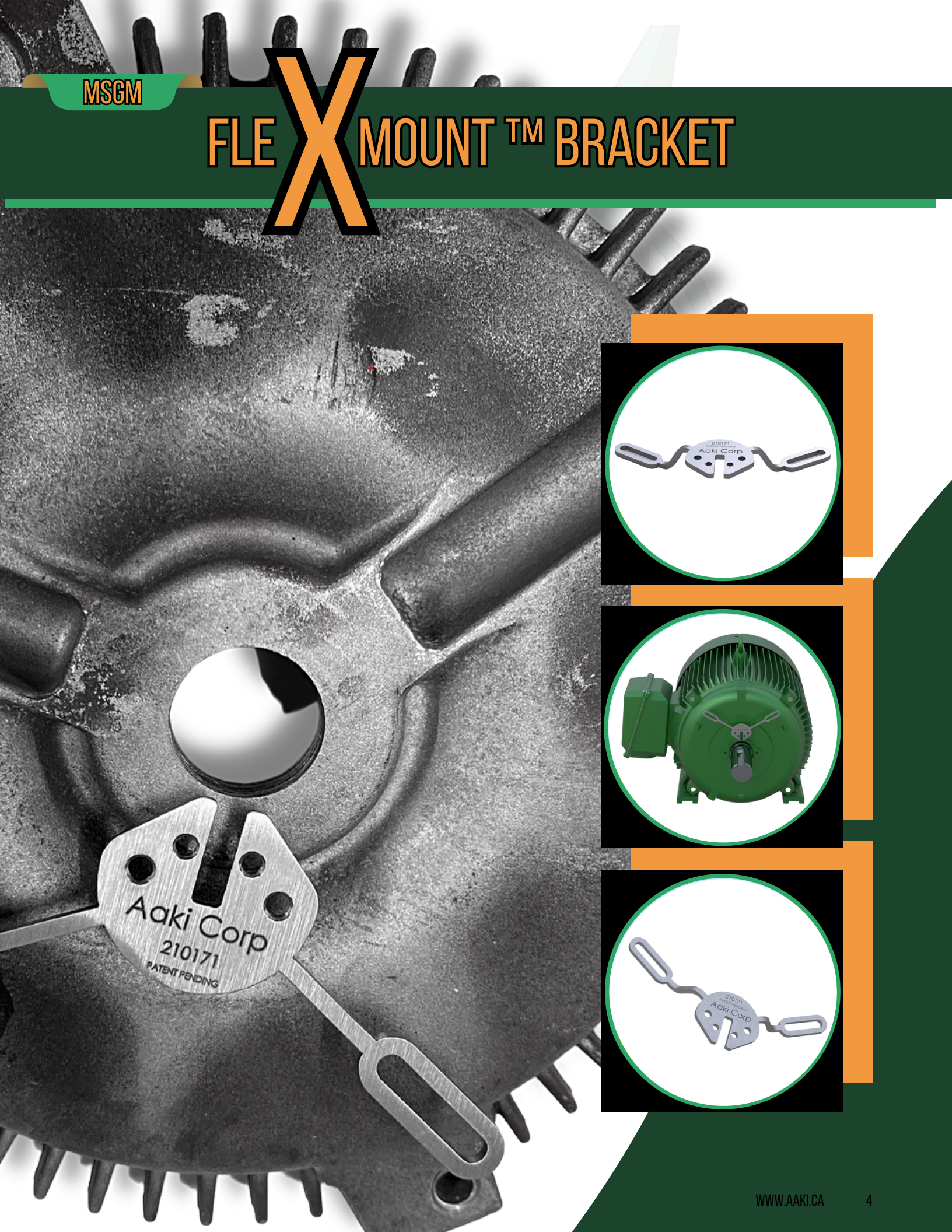
FOR THOSE WITH UNIQUE SIZE OR SHAPE REQUIREMENTS, WE OFFER CUSTOM SIZES TAILORED TO YOUR SPECIFIC NEEDS.





MSCM

# FLEX MOUNT™ BRACKET





IN EXTREME CASES, VFD-INDUCED ELECTRICAL DISCHARGE CAN CAUSE PITTING IN BEARINGS IN JUST A FEW WEEKS, LEADING TO PREMATURE BEARING FAILURE AND POTENTIALLY CATASTROPHIC MOTOR DAMAGE.

- E. Kurtz and D. Erickson "Insulation and Bearing Failures in VFD-Driven Motors" - published in Industry Applications Magazine."

SEE FULL LINE OF  
FLEXMOUNT™  
OPTIONS →



## MSGM FLEXMOUNT™ BRACKET

### TECHNICAL SPECIFICATIONS:

- Dimensions: See website for specific Flexmount™ sizes and shapes
- Weight: Weights vary depending on Flexmount™ style
- Materials: The Flexmount™ Grounding Bracket is made from durable, machined stainless steel
- Product Compatibility: The Flexmount™ Grounding Bracket is compatible with standard size Motor Shaft Grounding Modules

### PRODUCT OVERVIEW:

Introducing our Flexmount™ Bracket Line - the ultimate solution for mounting your Motor Shaft Grounding Module quickly, cost-effectively, and with a professional finish. Our spacer plates, extension plates, and tools make installation easier, but for some configurations, mounting a Grounding Module can still be a challenge. That's why we created our Flexmount™ Bracket Line, consisting of a MSGM mounting plate section. The process is simple and easy to install. Aaki brackets come in various sizes and configurations to fit different motor endbell geometries.

### KEY FEATURES:

- We currently have 24 Flexmount™ styles, covering a wide range of motors
- Flexmount™ Brackets are designed with mounting surface, flexible arms, and mounting section for simplified installation
- Stainless steel brackets offer excellent corrosion resistance, ensuring long-lasting performance in harsh environments
- Designed to fit a wide range of motor configurations

MOTOR SHAFT  
GROUNDING MODULE

FLEXMOUNT™ BRACKET

FLEXFORM™ TOOL

VERTMOUNT BRACKET

EXTENSION PLATES

SPACER PLATES

DRILL BUDDY™  
INSTALLATION TOOL

CONTACT INFO



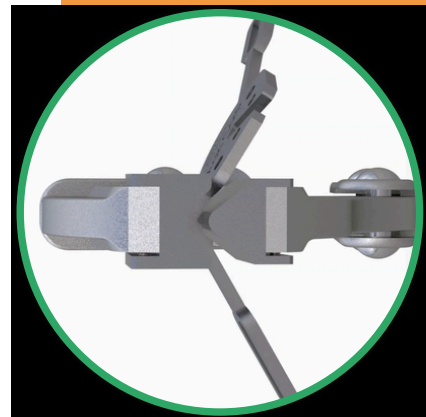
FOR THOSE WITH UNIQUE SIZE OR SHAPE REQUIREMENTS, WE OFFER CUSTOM SIZES TAILORED TO YOUR SPECIFIC NEEDS.





MSGM

# FLEX FORM™ TOOL



IN A STUDY CONDUCTED BY THE ELECTRIC POWER RESEARCH INSTITUTE (EPRI), IT WAS FOUND THAT THE USE OF MOTOR SHAFT GROUNDING SYSTEMS REDUCED BEARING FAILURE RATES BY UP TO 70% IN VFD APPLICATIONS.  
- Electric Power Research Institute (EPRI)



## FLEXFORM™ TOOL



### TECHNICAL SPECIFICATIONS:

- Dimensions: 24cm X 7cm X 3cm (9.45 inches x 2.76 inches x 1.18 inches)
- Weight: 650g
- Materials: tool steel
- Product Compatibility: Designed for use with the Flexmount™ product line

### PRODUCT OVERVIEW:

The Flexform™ Tool is an essential tool designed for creating professional consistent installations. Attaches to a standard vice grip, providing the user with essentially a handheld progressive die. Its unique design allows for easy manipulation of the Flexmount™ bracket without weakening the mount itself, making it ideal for field installations. Simply place the Flexmount™ bracket onto the tool's base, align it with the appropriate bending slot, and use the handle to bend the mount to the desired angle. The tool's bending slots provide accurate and consistent bends, ensuring a secure fit onto the motor shaft. Save time and effort during installation with the Flexform™ Tool, an essential addition to any toolkit.

### KEY FEATURES:

- Made from durable, high-quality tool steel for long-lasting use
- Allows for easy manipulation of the Flexmount™ without weakening the mount itself, providing accurate and consistent bends

MOTOR SHAFT  
GROUNDING MODULE

FLEXMOUNT™ BRACKET

FLEXFORM™ TOOL

VERTMOUNT BRACKET

EXTENSION PLATES

SPACER PLATES

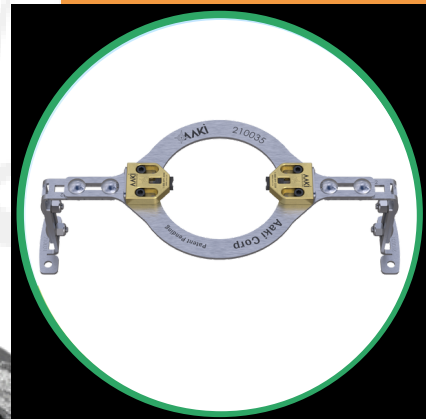
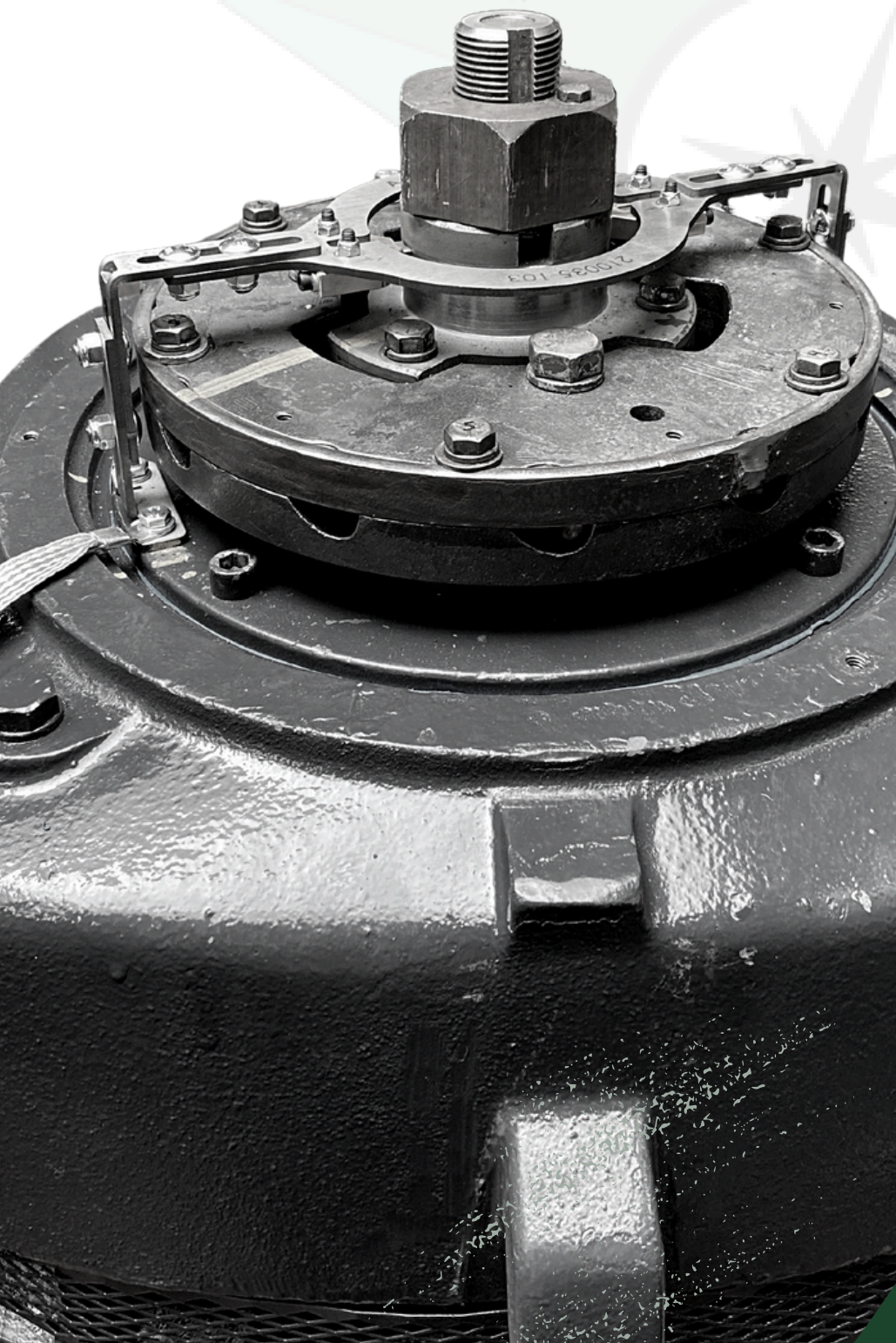
DRILLBUDDY™  
INSTALLATION TOOL

CONTACT INFO



FOR THOSE WITH UNIQUE SIZE OR SHAPE REQUIREMENTS, WE OFFER CUSTOM SIZES TAILORED TO YOUR SPECIFIC NEEDS.

# VERT MOUNT BRACKET





THE USE OF MOTOR SHAFT GROUNDING SYSTEMS IS RECOMMENDED BY THE AMERICAN PETROLEUM INSTITUTE (API) IN THEIR STANDARDS FOR CENTRIFUGAL PUMPS USED IN THE PETROLEUM, PETROCHEMICAL, AND NATURAL GAS INDUSTRIES.  
- API 610, centrifugal pumps used in the petroleum, petrochemical, and natural gas industries.



# AAKI VERTMOUNT BRACKET

## TECHNICAL SPECIFICATIONS:

- Dimensions: 88.9 mm H x 76.2 mm W (3.5 inches H x 3 inches W)
- Weight: The complete kit (including the VerTmount Grounding Bracket and bolts) weighs approximately 450g
- Materials: The VerTmount Grounding Bracket is made from durable, machined stainless steel for a professional finish
- Product Compatibility: The VerTmount Grounding Bracket is compatible with standard size Motor Shaft Grounding Modules

## PRODUCT OVERVIEW:

The VerTmount Grounding Bracket is the essential system designed to provide support and stability to motor shaft grounding modules, mounted to electric motors in the vertical position. The complete set (configuration kit) comes with the VerTmount Grounding Bracket, main grounding ring that holds the motor shaft grounding modules, and the custom bracketry to allow for the installation on almost any motor configuration. Two Aaki standard MSGMs are supplied to complete the system. The bracket simplifies the installation process, making it quick and easy to install a set standard size Motor Shaft Grounding Modules correctly, reducing the risk of errors that lead to costly downtime and repairs.

## KEY FEATURES:

- Complete mounting system kit for hassle-free installation
- Durable, machined stainless steel construction
- Cost-effective protection for equipment

MOTOR SHAFT  
GROUNDING MODULE

FLEXMOUNT™ BRACKET

FLEXFORM™ TOOL

VERTMOUNT BRACKET

EXTENSION PLATES

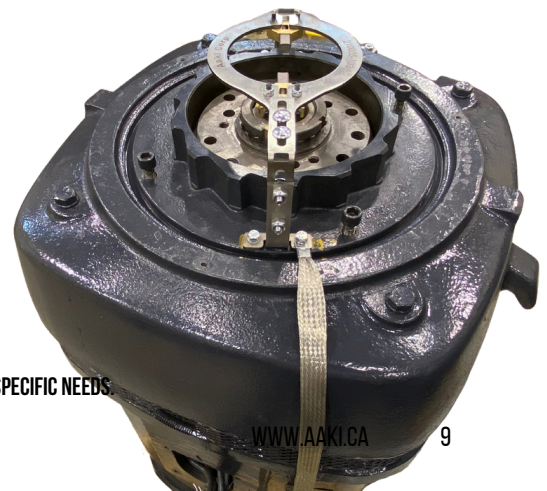
SPACER PLATES

DRILLBUDDY™  
INSTALLATION TOOL

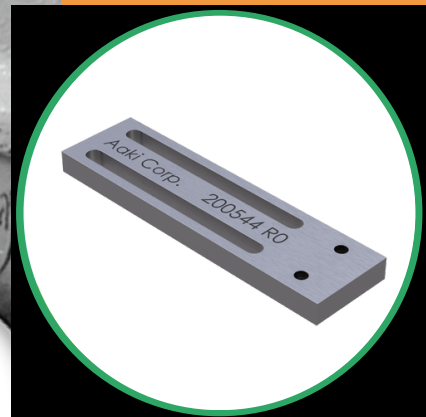
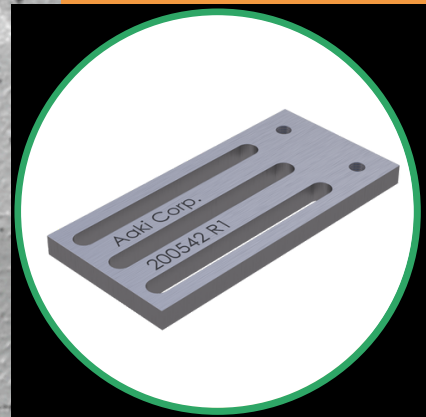
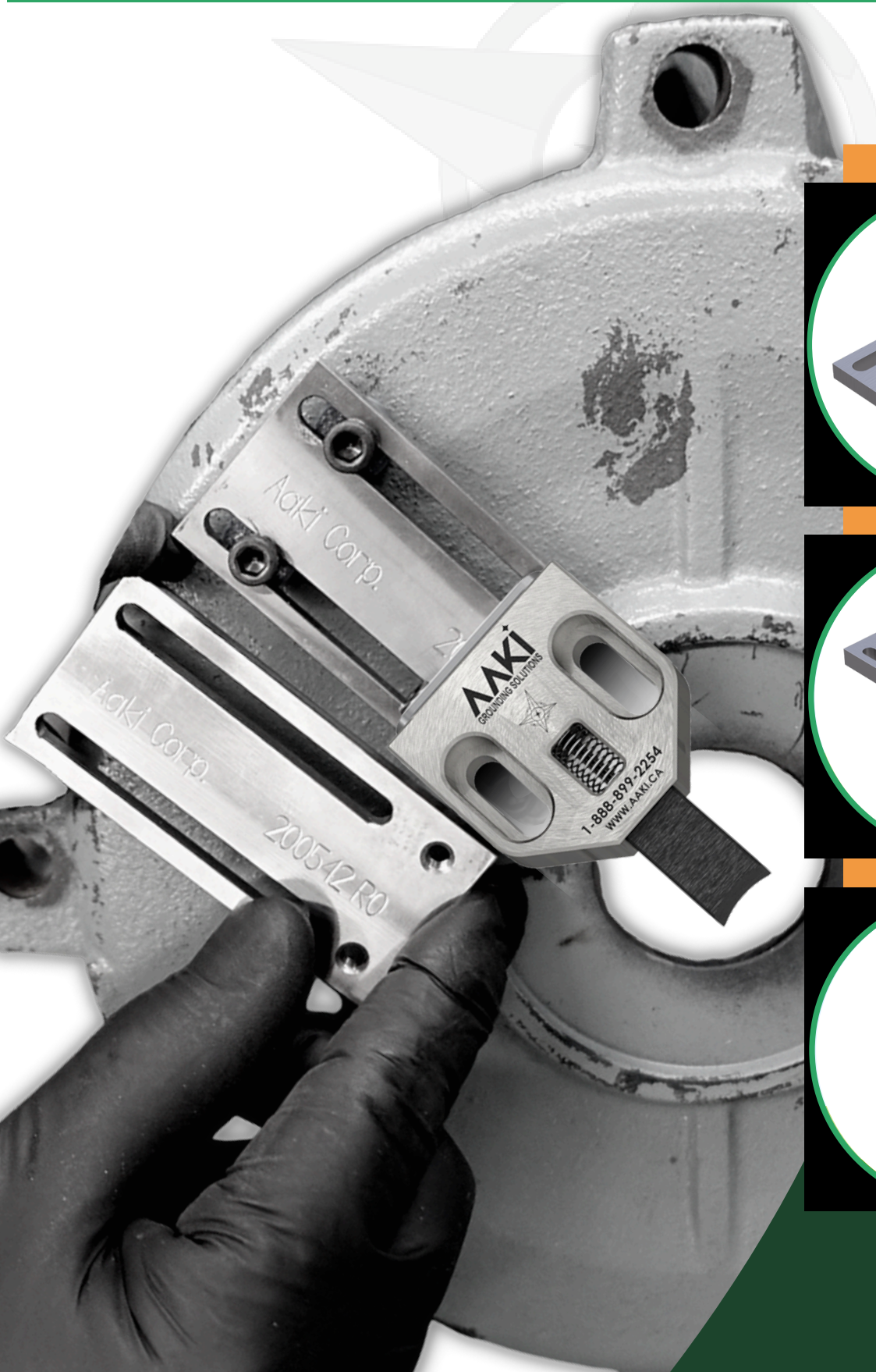
CONTACT INFO



FOR THOSE WITH UNIQUE SIZE OR SHAPE REQUIREMENTS, WE OFFER CUSTOM SIZES TAILORED TO YOUR SPECIFIC NEEDS.



# EXTENSION PLATES



"MOTOR SHAFT VOLTAGE CAN CAUSE SIGNIFICANT BEARING DAMAGE IF NOT ADDRESSED. WITH THE INSTALLATION OF A MOTOR SHAFT GROUNDING SYSTEM, YOU CAN GREATLY EXTEND THE LIFE OF YOUR BEARINGS AND REDUCE THE RISK OF COSTLY DOWNTIME AND REPAIRS."

- Eric Prevost, Business Development Manager at Electro Static Technology  
article: Preventing Electrical Damage to Motors: Protecting Bearings from VFD-Induced Electrical Discharge - published February 2016 issue of Pumps & Systems magazine.



## MSGM EXTENSION PLATE



### TECHNICAL SPECIFICATIONS:

- Dimensions: 36mm x 75mm x 5mm (1.5 inches x 2.95 inches x 0.2 inches)
- Weight: 83g
- Material: Mild Steel
- Product Compatibility: Compatible with Standard Size Motor Shaft Grounding Modules
- Additional Info: Pre-tapped and slotted to accept #10 screws

### PRODUCT OVERVIEW:

The Extension Plate is an innovative solution designed for Standard Size Motor Shaft Grounding Modules. Made with durable materials and pre-tapped and slotted for easy installation, module provides the installer with an alternate mounting location.

The Extension Plate is a user-friendly and affordable option for securely attaching a grounding module to safeguard electric motors against damaging electrical currents.

### KEY FEATURES:

- Extension Plate designed for Standard Size MSGMs for maximum motor protection and lifespan extension
- Made of high-quality materials for durability and reliability in harsh environments
- Achieve secure and long-lasting grounding connection, reducing downtime and repairs
- Can be used to adjust for the perfect fit, allowing for maximum protection

MOTOR SHAFT  
GROUNDING MODULE

FLEXMOUNT™ BRACKET

FLEXFORM™ TOOL

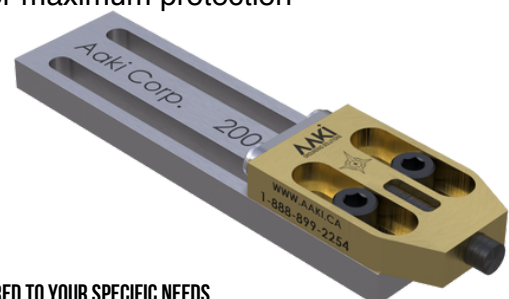
VERTMOUNT BRACKET

EXTENSION PLATES

SPACER PLATES

DRILLBUDDY™  
INSTALLATION TOOL

CONTACT INFO



FOR THOSE WITH UNIQUE SIZE OR SHAPE REQUIREMENTS, WE OFFER CUSTOM SIZES TAILORED TO YOUR SPECIFIC NEEDS.



"EDM PITTING IN MOTOR BEARINGS CAN CAUSE CATASTROPHIC FAILURE, RESULTING IN MOTOR REPLACEMENT AND UNSCHEDULED DOWNTIME."  
- EASA (Electrical Apparatus Service Association)



## MSGM EXTENSION PLATE

### TECHNICAL SPECIFICATIONS:

- Dimensions: 19mm x 70mm x 5mm (0.75 inches x 2.76 inches x 0.2 inches)
- Weight: 40g
- Material: Mild Steel
- Product Compatibility: Mini Size Motor Shaft Grounding Modules
- Additional Information: Pre-tapped and slotted to accept #10 screws

### PRODUCT OVERVIEW:

When working in tight spaces mounting a MSGM can sometimes be a challenge. The mini extension plate takes the challenge of finding suitable mounting sites on smaller electric motors with minimal mounting space. Made with durable materials and pre-tapped and slotted for easy installation, this module is suitable for non-typical configurations and ensures reliable grounding protection in even the most challenging mounting scenarios. The Extension Plate is a cost-effective and easy-to-use solution for protecting electric motors from harmful electrical currents.

### KEY FEATURES:

- Pre-tapped and slotted for easy installation
- Suitable for non-typical configurations
- Provides reliable grounding protection for Mini Motor Shaft Grounding Modules
- Made with durable materials to ensure reliable performance
- Can be used to adjust for the perfect fit, allowing for maximum protection

MOTOR SHAFT  
GROUNDING MODULE

FLEXMOUNT™ BRACKET

FLEXFORM™ TOOL

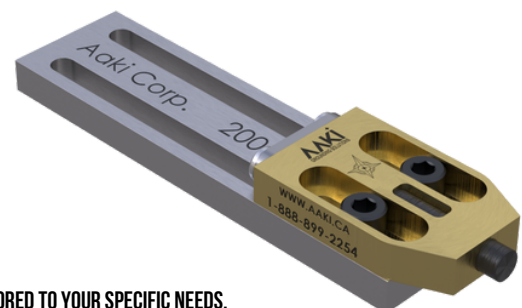
VERTMOUNT BRACKET

EXTENSION PLATES

SPACER PLATES

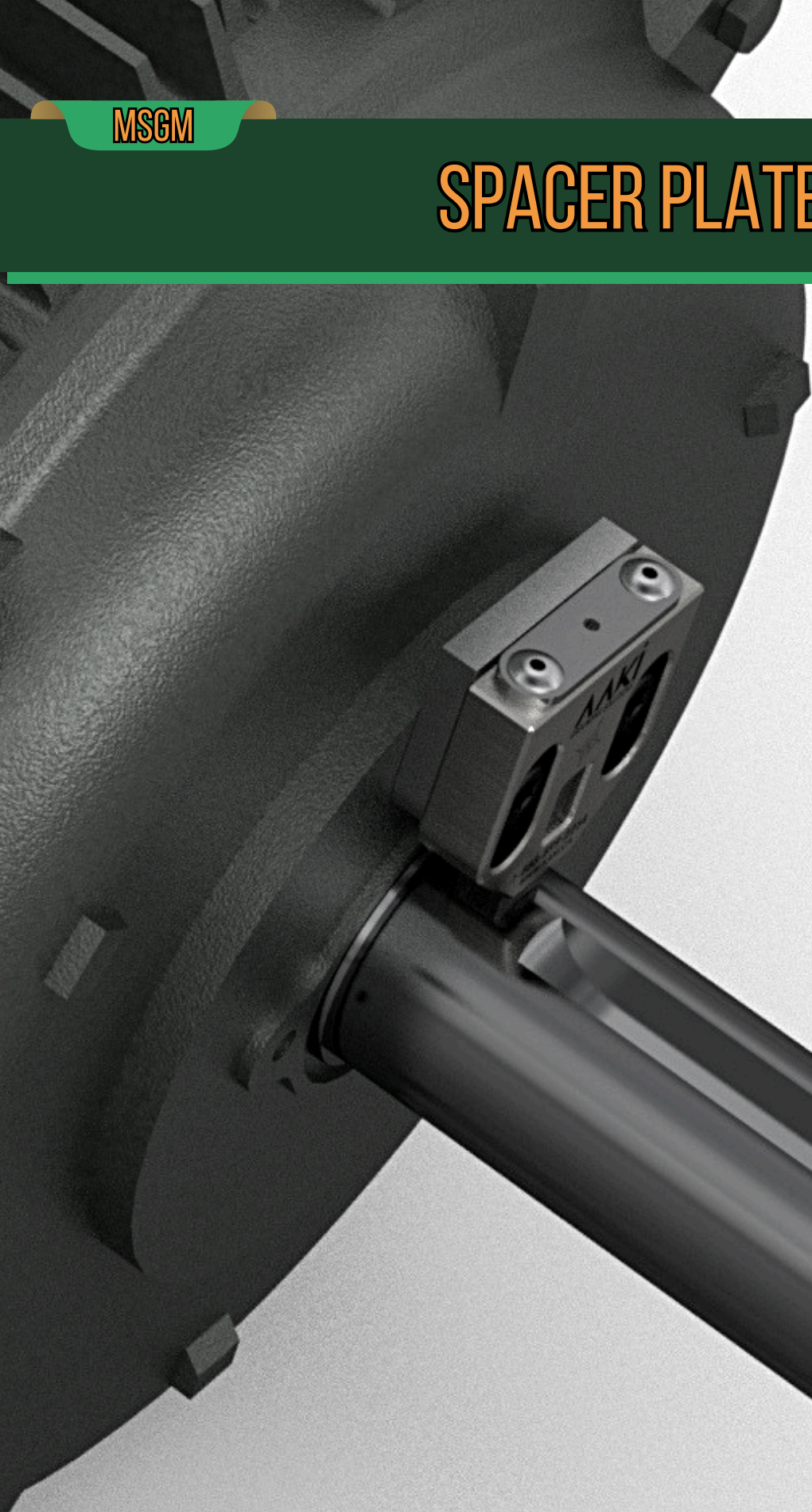
DRILLBUDDY™  
INSTALLATION TOOL

CONTACT INFO



FOR THOSE WITH UNIQUE SIZE OR SHAPE REQUIREMENTS, WE OFFER CUSTOM SIZES TAILORED TO YOUR SPECIFIC NEEDS.

# SPACER PLATES





"WITH THE USE OF MOTOR SHAFT GROUNDING MODULES, THE LIFESPAN OF YOUR ELECTRIC MOTORS CAN BE EXTENDED AND EQUIPMENT DOWNTIME CAN BE REDUCED, RESULTING IN COST SAVINGS FOR YOUR BUSINESS."

- Electrical Construction & Maintenance Magazine



## MSGM SPACER PLATE STANDARD



### TECHNICAL SPECIFICATIONS:

- Dimensions: 33mm x 33mm x 5mm (1.3 inches x 1.3 inches x 0.2 inches)
- Weight: 83g
- Material: Mild Steel
- Product Compatibility: The Standard Spacer Plate is specifically designed to securely mount the standard MSGM

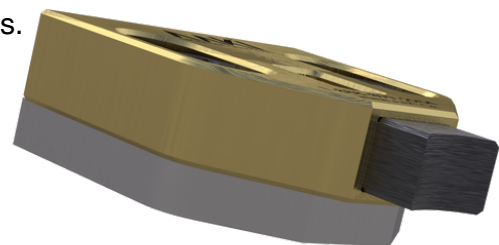
### PRODUCT OVERVIEW:

The Standard Spacer Plate is a simple yet effective solution for those looking to ensure a secure and stable mounting of their Standard Size Motor Shaft Grounding Modules. This product is specifically designed to work with standard modules and is pre-sized for easy installation, eliminating the need for whittling spacers and saving time. The Standard Spacer Plate can help put the MSGM on the right place on the shaft, above the bearing housing and below the keyway. This Spacer Plate provides a professional-looking result that's an excellent addition to any toolkit, and a cost-effective solution for enhancing motor performance and longevity.

There is a Thin Standard Spacer Plate available that is only 2mm thick, making the dimensions 33mm x 33mm x 2mm (1.3 inches x 1.3 inches x 0.08 inches). The part number for this Thin Standard Spacer Plate is 200554.

### KEY FEATURES:

- Pre-sized Spacer Plate saves time and eliminates the need for whittling spacers, and adds a professional look.
- It provides a stable and secure mounting solution, eliminating the risk of errors that could cause costly downtime and repairs.



FOR THOSE WITH UNIQUE SIZE OR SHAPE REQUIREMENTS, WE OFFER CUSTOM SIZES TAILORED TO YOUR SPECIFIC NEEDS.

MOTOR SHAFT  
GROUNDING MODULE

FLEXMOUNT™ BRACKET

FLEXFORM™ TOOL

VERTMOUNT BRACKET

EXTENSION PLATES

SPACER PLATES

DRILLBUDDY™  
INSTALLATION TOOL

CONTACT INFO

ACCORDING TO A REPORT BY THE ELECTRICAL APPARATUS SERVICE ASSOCIATION (EASA), BEARING DAMAGE CAUSED BY ELECTRICAL CURRENTS IS ESTIMATED TO COST THE UNITED STATES ELECTRIC MOTOR INDUSTRY OVER \$3 BILLION ANNUALLY.



## MSGM SPACER PLATE



### TECHNICAL SPECIFICATIONS:

- Dimensions: 19mm x 34mm x 5.5mm (0.75 inches x 1.34 inches x 0.22)
- Weight: 14g
- Material: Mild Steel
- Product Compatibility: Motor Shaft Grounding Module Mini

### PRODUCT OVERVIEW:

The Mini Size Spacer Plate is a compact and cost-effective solution designed to ensure a secure and stable mounting of Mini Size Motor Shaft Grounding Modules. This pre-sized Spacer Plate eliminates the need for whittling spacers, or using a stack of washers, saving time and producing a professional-looking result. Its compact design makes it ideal for tight or unique mounting scenarios, enabling a hassle-free installation process.

### KEY FEATURES:

- Secure and stable mounting of modules, reducing downtime and increasing productivity
- Pre-sized Spacer Plate saves time, produces professional-looking result
- Compact size for tight or unique mounting scenarios, hassle-free installation

MOTOR SHAFT  
GROUNDING MODULE

FLEXMOUNT™ BRACKET

FLEXFORM™ TOOL

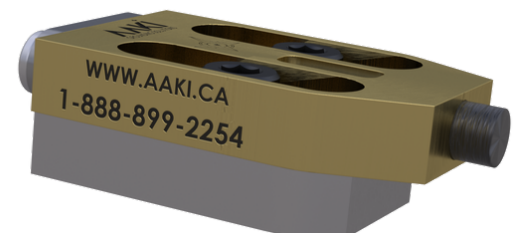
VERTMOUNT BRACKET

EXTENSION PLATES

SPACER PLATES

DRILLBUDDY™  
INSTALLATION TOOL

CONTACT INFO

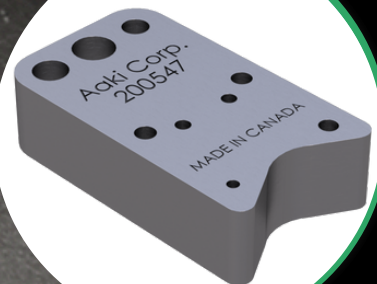


FOR THOSE WITH UNIQUE SIZE OR SHAPE REQUIREMENTS, WE OFFER CUSTOM SIZES TAILORED TO YOUR SPECIFIC NEEDS.



MSCM

# DRILLBUDDY™ INSTALLATION TOOL



"THE USE OF SPECIALIZED INSTALLATION TOOLS CAN GREATLY INCREASE EFFICIENCY AND ACCURACY, SAVING TIME AND REDUCING THE RISK OF ERRORS OR DAMAGE DURING THE INSTALLATION PROCESS."

- Electrical Construction & Maintenance Magazine



# **DRILLBUDDY™ INSTALLATION TOOL**



## TECHNICAL SPECIFICATIONS:

- Dimensions: 165.1 x 50.8 x 25.4 mm (6.5 x 2 x 1 inches)
- Weight: 200g
- Materials: High Carbon Steel
- Product Compatibility: Suitable for drilling holes in motors to mount motor shaft grounding modules

## PRODUCT OVERVIEW:

Our Motor Shaft Grounding Module DrillBuddy™ Installation Tool is a specialized tool designed to simplify and speed up the installation process of our motor shaft grounding modules. This high-quality tool is specifically designed to align mounting holes in electric motor end bells for accurate and quick mounting of motor shaft grounding modules.

Simply set the DrillBuddy™ on the motor shaft, choose the correct holes, and drill. A perfect and professional fit every time. No more messing with callipers and rulers where you wish you had a third hand!

## KEY FEATURES:

- Designed to simplify and speed up the installation process of motor shaft grounding modules
- Create professional looking, consistent results in less time for less \$\$\$
- Made from high-quality materials for durability and longevity
- Essential tool for ensuring proper installation, saving time and money

MOTOR SHAFT  
GROUNDING MODULE

FLEXMOUNT™ BRACKET

FLEXFORM™ TOOL

VERTMOUNT BRACKET

EXTENSION PLATES

SPACER PLATES

DRILLBUDDY™  
INSTALLATION TOOL

CONTACT INFO



FOR THOSE WITH UNIQUE SIZE OR SHAPE REQUIREMENTS, WE OFFER CUSTOM SIZES TAILORED TO YOUR SPECIFIC NEEDS.





# WE ARE HERE TO HELP CONTACT INFORMATION:

Rest easy with Aaki by your side, ready to tackle any challenge or problem that keeps you up at night. Our dedicated team is here to provide the support and assistance you need.

Whether you have questions about our products or parts, our knowledgeable experts are just a call or email away. We're not only here to help, but we also welcome innovators with new ideas. Share your vision with our engineering team, and together we can bring it to life.

If you're interested in partnering with us to carry Aaki products, we're excited to collaborate with you. Elevate your service shop or business with our custom branding services, creating a unique and professional image that sets you apart from the competition.

Don't wait any longer—reach out to us today and let Aaki be your trusted partner.

MOTOR SHAFT  
GROUNDING MODULE

FLEXMOUNT™ BRACKET

FLEXFORM™ TOOL

VERTMOUNT BRACKET

EXTENSION PLATES

SPACER PLATES

DRILL BUDDY™  
INSTALLATION TOOL

CONTACT INFO



WEBSITE

[WWW.AAKI.COM](http://WWW.AAKI.COM)



PHONE

1-888-899-AAKI ( 2254)



EMAIL

[info@aaki.ca](mailto:info@aaki.ca)



YOUTUBE

[@aakisolutions](https://www.youtube.com/@aakisolutions)